

Enquiry    Ordering

Company stamp/signature: \_\_\_\_\_

Customer number: \_\_\_\_\_

Contact person: \_\_\_\_\_

Telephone: \_\_\_\_\_

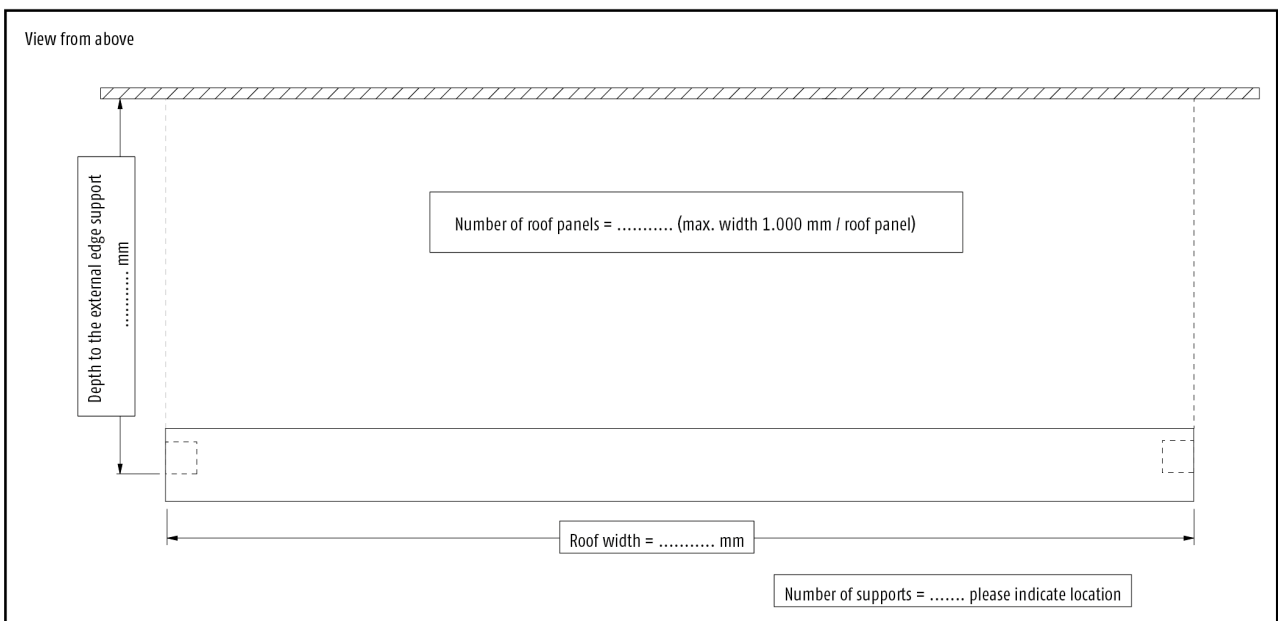
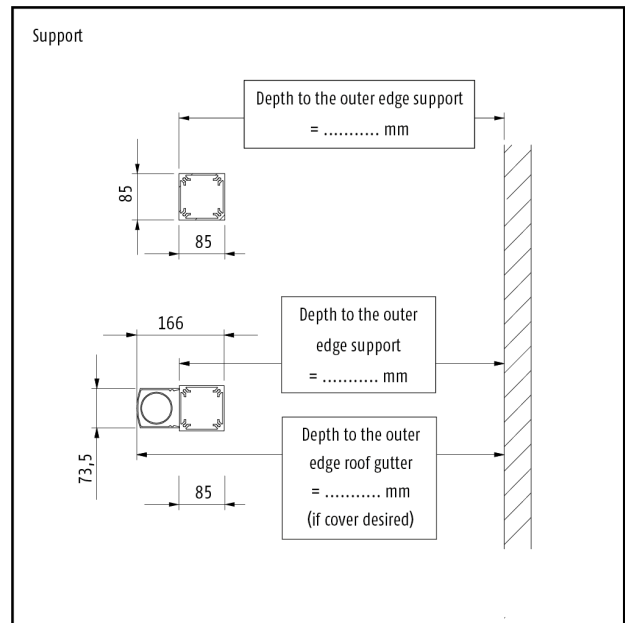
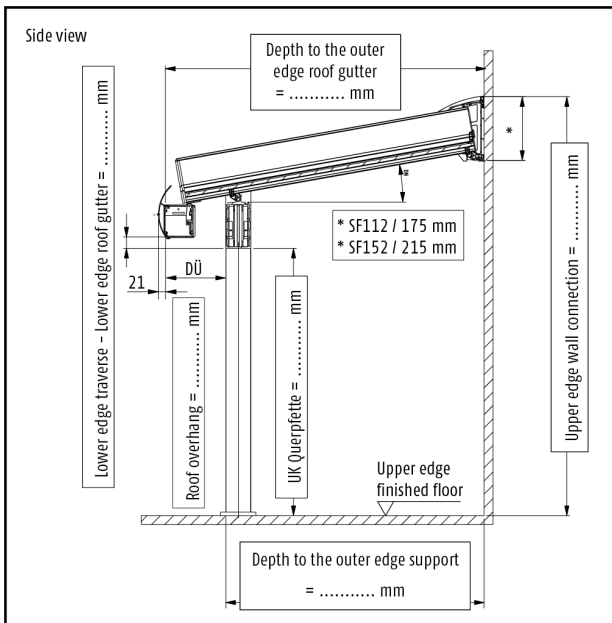
Offer number: \_\_\_\_\_

Commission: \_\_\_\_\_

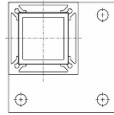
Postcode mounting location: \_\_\_\_\_

Standard snow load:  65 kg/m<sup>2</sup>    85 kg/m<sup>2</sup>    125 kg/m<sup>2</sup>    160 kg/m<sup>2</sup>    230 kg/m<sup>2</sup>    290 kg/m<sup>2</sup>    350 kg/m<sup>2</sup>

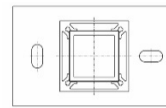
Roof overhang:  without    with (only with Plus variant)   Length: \_\_\_\_\_ (min. 200 mm / max. 500 mm)



Support feet:



Amount \_\_\_\_\_



Amount \_\_\_\_\_

Ground level \_\_\_\_\_ mm

(for adaptation of the support length on the construction site)

Design gutter:

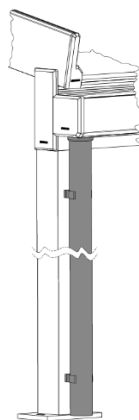
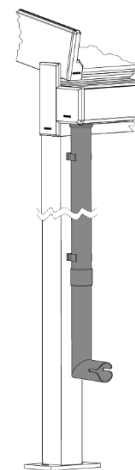
square

round

Drainage without roof overhang:

(A second downpipe is recommended for a roof surface area of 20 m<sup>2</sup> or more!)

 Set 1

 Set 2

 Set 3


Set 1 (Screw supports incl. seal, 90° spout, aluminium in roof colour)

Set 2 (Screw supports incl. seal, downpipe 2,500 mm, 2 clamp mounts, aluminium in roof colour)

Set 3 (Screw necks incl. seal, downpipe 2,500 mm, 87° pipe bend with outlet, 1 socket, 2 clamp mounts, aluminium in roof colour)

Aluminium covering panel in the roof colour for set 2 or 3

Cover panel also for supports without a downpipe

Position of drainage:

(External view)

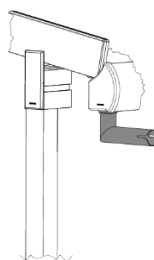
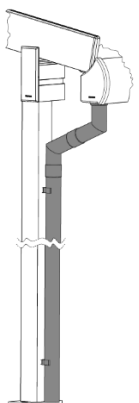
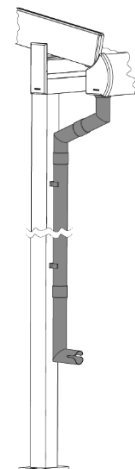
left

right

middle (only possible if there are 3 or more support)

Drainage with roof overhang:

(A second downpipe is recommended for a roof surface area of 20 m<sup>2</sup> or more!)

 Set 1

 Set 4

 Set 5


Set 1 (Screw supports incl. seal, 90° spout, aluminium in roof colour)

Set 4 (Screw necks incl. seal, 2 pipe bends 67° 420 x 200 mm, downpipe 2.500 mm, 2 clamp mounts, aluminium in roof colour)

Set 5 (Screw necks incl. sea, 2 pipe bends 67° 420 x 200 mm, downpipe 2.500 mm, pipe bend 87°, 2 clamp mount, 3 clutches, aluminium in roof colour)

Aluminium covering panel in the roof colour for set 2 or 3

Cover panel also for supports without a downpipe

Position of drainage:

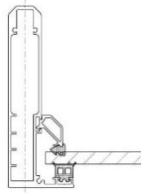
(External view)

left

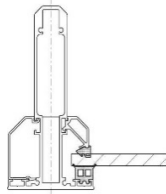
right

middle (only possible if there are 3 or more support)

Verge rafters:



(standard)



(required for shades below)

Skylight:

 left

 right

Glass dividing transom skylight:

 yes

 no

Glazing designed for:

 8 mm

 10 mm

 12 mm

Fillings/multi-skin sheets for:

 16 mm

 24 mm

Glazing bars for division of the glass:

 yes

 no

Colour:

 Pre-anodization

 RAL \_\_\_\_\_

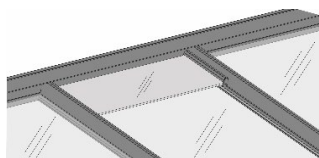
 Special colour: \_\_\_\_\_

Accessory:

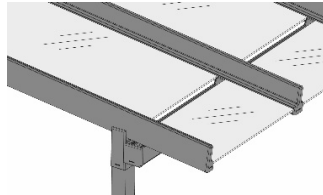
 part Adapter for external shading

 part Adapter for internal shading

Special equipment:  Wall-side supports with wall-side purlin



Roof ventilation (price per roof field)



Dachlite (glass interruption per roof field at the overhang)

Lighting:

 LED spots

Number per rafter: \_\_\_\_\_

Number of rafters with spots: \_\_\_\_\_

 Light bar profile for rafters without spots

 LED stripes

Number of rafters with stripes: \_\_\_\_\_

 Light bar profile for rafters without stripes

 Dimm controller

 Cable duct wall connection

Substructure elements:

front:

 SF20  
 SF42

 SF22  
 SF45

 SF30

left:

 SF20  
 SF42

 SF22  
 SF45

 SF30

right:

 SF20  
 SF42

 SF22  
 SF45

 SF30

Please complete and send the corresponding system order form!

Please add layout or elevation sketches and notes! (Note: use external view!)